

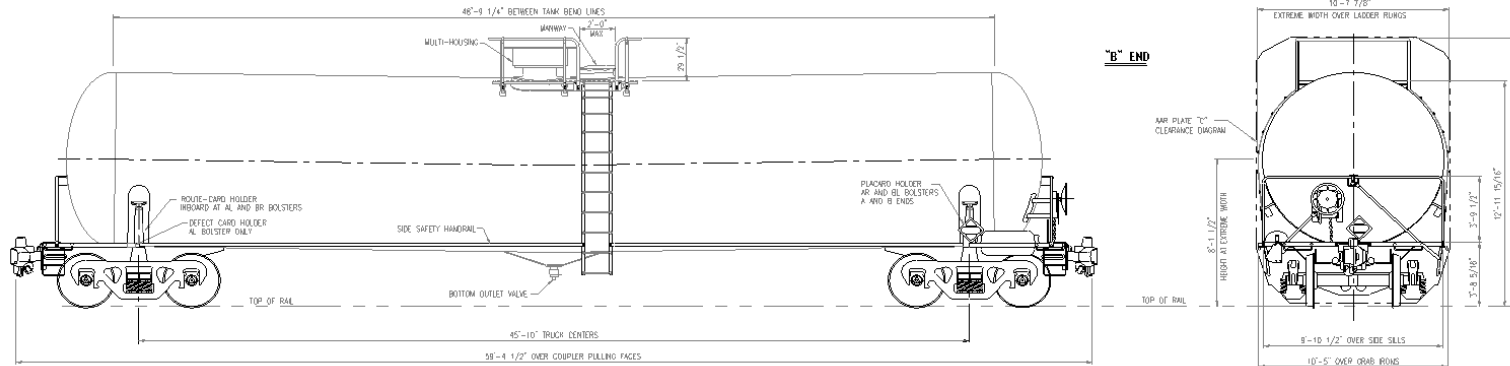


30,145 Gallons
Capacity Tank Car

TILC / World Fuel Services Corporation

T-11009A

REPORTING MARKS & QTY: 10 cars TILX (316321-316330)



REVISION/DATE/ENGR:
1 / 8-22-2011 / JA
ADDED RUNNING NUMBERS

GENERAL		TRUCKS		COATINGS			
Year Built	2011	Wheels	Class "C" 1W 36", w/ AAR 1B Tread Profile, Griffin	Surface Prep., Exterior	SSPC-SP6	Paint, Exterior	Black DTM Epoxy
Car Serial Number - Low	T11009-1	Axles	AAR M-101 Grade "F", 6-1/2" x 9", Std Forge	Surface Prep., Interior	Sweep Clean	Lining, Interior	None
Car Serial Number - High	T11009-10	Roller Bearings	AAR NFL, Class "K", 6-1/2" x 9", Brenco Premium	WALKWAYS AND PLATFORMS			
Ref Drawing Number	S10020	Adapters	6-1/2" x 9", Hardened Crown and Shoulders	Top	Divided CS Plank, 9 1/2" x 8" w/ Side Ladders	End	Full Width x 11 1/2" Plank, CS
Tank Specification	DOT111A100W1	Truck Side Frame:	Gr "B+" Steel to AAR M-203 & M-210	TOP FITTINGS			
Stenciled Specification	DOT111A100W1	Truck Bolster:	Gr "B+" Steel to AAR M-202, M-210 & S-305	Manway	20" I.D. CS Flued Nozzle/ Reinforcement Pad	Fittings Nozzle	20" Diameter Flued Nozzle w/ Bolted CS Cover Plate/ Reinforcement Pad
DIMENSIONS AND WEIGHTS		Center Plate Liners, Vert/Horiz	1-3/4" x 16" dia net, SST welded/Manganese	Manway Cover	6 Bolt Hinged Steel Casting	Protective Housing	3/4" Wall Housing w/ Flat Lid
Draft Sill Design	Type 23 Stub Sill	Stabilizers	S2 HD, SCT	Vacuum Relief	3/4# Midland A220-W-NS	Discharge Conn.	3" J'Bury 9150 Flanged Ball Valve w/ CS Body, SS Trim, And CS Plug
Tank, Tangent to Tangent	48'-9 1/4"	Truck Springs	D5, 3-11/16" travel, 286K GRL, SCT	Safety Relief	Valve, 75# Midland A-2097 Mounted On the Fittings Cover Plate	Discharge Pipe	3" Sch 40 CS Pipe welded to the underside of the Coverplate w/ CS guide & pads
Tank, ID	119 3/8"	Pedestal Roof Liners	Transdyne	Outage Scale	SS Visual Bar	Air / Vapor Connection	2" J'Bury 9150 Flanged Ball Valve w/ CS Body, SS Trim, And CS Plug
Length over Coupler Pulling Faces	59'-4 1/2"	Truck Side Bearing	Const Contact Long Travel TCC-III-45-LT, Miner	Gage Device	None	Thermowell	None
Truck Centers	45'-10"	Brake Beam	AAR No. 24, Miner	Sample Line	None	BOTTOM FITTINGS	
Tank Slope	0.1762 in/ft	Brake Beam Wr Pkt	Metallic, Miner	Outlet Valve	4" Jamesbury 9RET3-22HBXTFO External Ball Valve w/CS Body, SS Trim, & Extended Handle	Outlet Fittings	4" CS Noz, CS Cap & 2" CS Plug
Head Mat'l and Thickness	7/16" A516 Gr 70	Brake Shoes	AAR 2" Comp, RRFp	Air / Discharge	Teatit Blue/Teatit Blue, TF-1570	Outlet Saddle	Trinity Combination Saddle-Sump
Shell Mat'l and Thickness	7/16" TC128 Gr B	Brake Shoe Keys	Forged	Vacuum Relief	Teatit Blue TF-1570/Viton-B	Sump	Integral With Saddle
Shell Mat'l and Thickness	7/16" TC128 Gr B	Roller Bearing Retainer Keys	None	GASKETS/O-RINGS			
Vacuum Rating	3.8 psig	AIR BRAKES		Manway Cover	Buna-N	Safety Relief/O'Ring	Teatit Blue TF-1570 / Viton-B
Design Pressure/Test Pressure	100/165 psig	Type of Brakes	Body Mounted, Conventional Valve	Fittings Nozzle	Teatit Blue TF-1570	Outlet Valve	Teatit Blue TF-1570
Clearance Diagram, AAR	"C"	Brake Cylinder Size	10" x 12"	Air / Discharge	Teatit Blue/Teatit Blue, TF-1570	Outlet Nozzle / Cap	Teatit Blue TF-1570 / Buna-N
Capacity, Shell Full, Gallons	30,145	Braking Ratio-Loaded	Min 11%, Max 14%	Vacuum Relief	Teatit Blue TF-1570/Viton-B	T.well/Sample/Gage	None
Light Weight, lbs, est.	67,100	Braking Ratio-Empty	Min 15%, Max 32%	DRAFT SYSTEM			
Maximum Gross Rail Load, lbs	263,000	Braking Ratio-Handbrake	Min 10%	Couplers	AAR SE60EE, M&T	Notes: Cars are built as Packing Group II (Top Fittings Protection is included) Cars are not DOT 286 GRL capable. If the commodity is a PG III with a suitable Flash Point these cars may be suitable for AAR 286 service. International Chemtrec Decal	
Load Limit @ GRL	195,900	Empty/Load Device	Side Frame Actuated	Yokes	AAR SY40AE, M&T		
Allowable Weight per Gallon @ 2%	6.63 lb/gal	Slack Adjuster	AAR automatic, double acting	Coupler Carrier Wear Plate	AAR Manganese steel		
Outage, 2%, Gallons	603	Handbrake	Group "N", Long Release Handle, Bell Crank	Draft Gear	AAR M901E, Miner TF-880		
Effective Capacity, Gallons @ 2%	29,542	Hose Support	Cable Strap, 20406 IRECO				
Sized For	Crude Oil / PG II	DRAFT SYSTEM					
Curv., Horiz., Uncoupled	150'-0"						
Curv., Horiz., Coupled To Base Car	250'-0"						
Curv., Vert., Uncoupled	850'-0"						
Curv., Vert., Coupled To Base Car	1650'-0"						