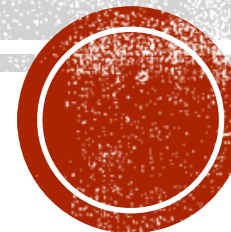


LOGISTICS PLANNING SERVICES 12 AXLE RAILCAR
KRL 300380



KRL 300380 SPECIFICATIONS

- Association of American Railroads (“AAR”) Mechanical Designation FD
- AAR Car Type Code F433
- Builder Kasgro Rail Corporation
- Date Built 2015
- Car Reporting Mark and Number KRL 300380
- Nominal Capacity 300 Tons
- Gross Rail Load 428 Tons
- Empty Weight 127.5 Tons
- 38’ Loadable Well
- Deck is fabricated from T1 Steel to maximize increased Net Lading weight and axle weights
- 100 ton trucks
- Minimum remaining life 40 yrs, with Rule 88 option to 50 yrs.
- Currently Under Kasgro Marketing Agreements for usage, and Car hire income
- Applicable Usages Fees managed under RIC-6740 and insured through Kasgro Rail Corp.

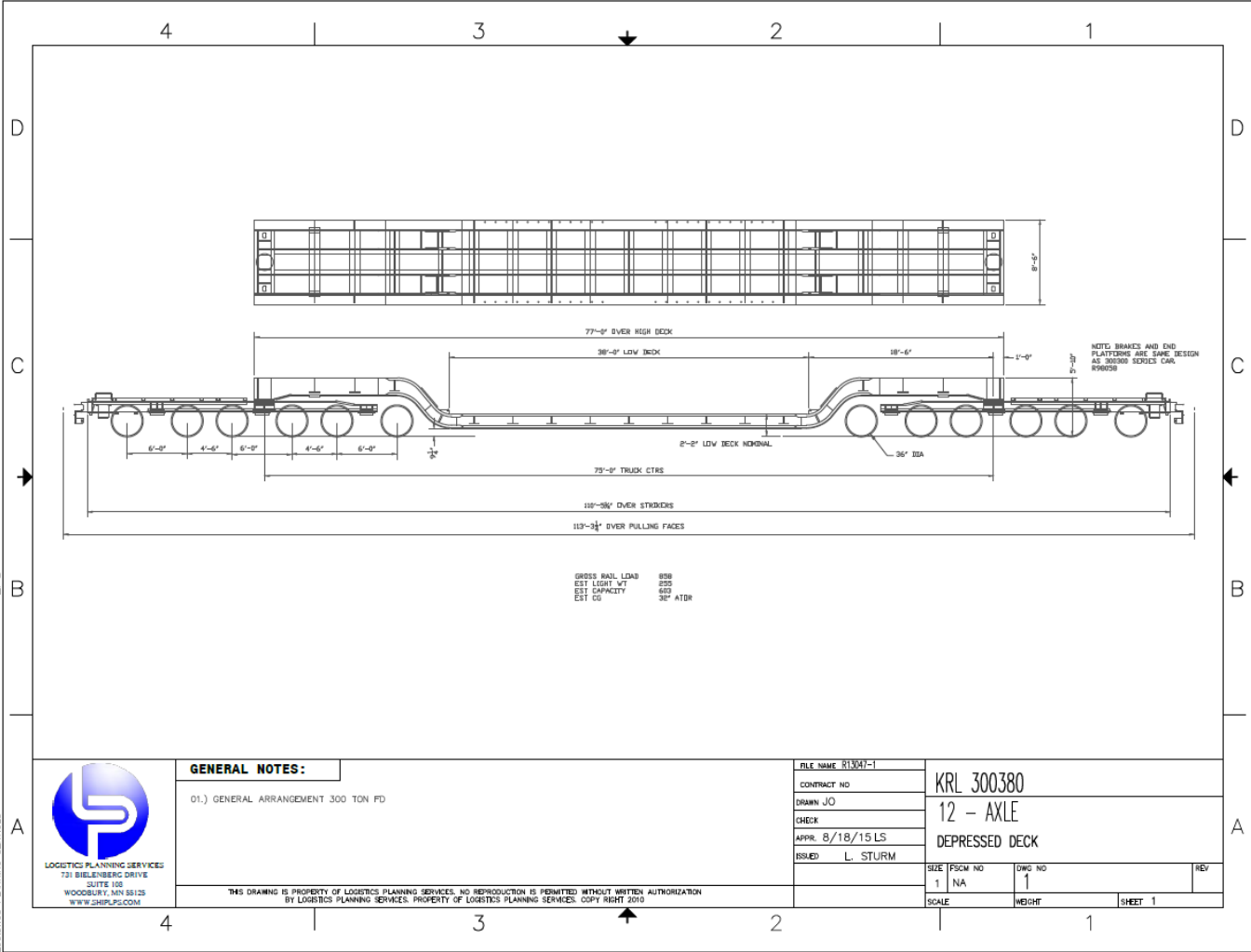


KRL 300380 UMLER DIMENSIONS

- Inside Width – 8'6"
- Inside Platform Length – 77'0"
- Inside Platform Width – 8'6"
- Platform Height Empty – 3'2" * Estimated Deck Compression to 2'2" under 85% load*
- Outside Height – 8'6"
- Outside Length – 113'3"
- Truck Center Spacing – 75' 0"
- Axle Spacings 6'0, 4'6", 6'0", 4'6", 6'0"



KRL 300380 DRAWING



KRL 300380 PHOTOS



CONTACT INFORMATION

- If you have interest in the purchase of the LPS owned KRL 300380 railcar please reach out to the below points of contact.
- Eric Heieren – 651-955-6714 – eric@shiplps.com
- Jason Johnson – 651-955-6715 – jjohnson@shiplps.com

