



Pacific Locomotive Association, Inc.

P.O. Box 515, Sunol, CA 94586

Operators of the Niles Canyon Railway Museum

October 14, 2019

To John Suscheck,
Ozark Mountain Railcar, LLC

Subject: Purchase Offer for Southern Pacific Locomotive No. 1744

Dear Sir,

This letter is to make a formal offer to purchase Southern Pacific Railroad 2-6-0 Baldwin Steam Locomotive #1744, OMR Listing ID 19951140, in the amount of \$110,000 USD by wire transfer. Date of funds transfer up to five (5) business days after a purchase agreement is signed.

The Pacific Locomotive Association, Inc. (PLA), is a 501(c)3 nonprofit organization, that operates the Niles Canyon Railway as a living history museum interpreting the importance of our heritage railroads in the development of California and the nation. The purpose of the organization is to preserve the physical aspects and atmosphere of Pacific Coast railroading during the period from 1910 to 1960. Our mission is to develop and operate a working railroad museum for the benefit of the general public.

The intention behind purchasing Southern Pacific #1744 is to restore the locomotive to operating condition and run it for the enjoyment of the public on the 9-mile scenic railroad in the San Francisco Bay Area. The PLA has successfully acquired and restored to operating condition four other steam locomotives of various ages, condition, and size.

As stated in the listing, the locomotive is complete, but requires complete restoration. After an inspection of the locomotive, as well as consultation with former employees of Iowa Pacific Holdings, this was determined to be mostly correct, with the following exceptions listed below. The remaining parts are scattered throughout the Alamosa, CO property. Appendix A of this offer contains a detailed map of the Alamosa property divided into zones, and Appendix B, a roster of parts and equipment by zone location that this offer for purchase is intended to include, but not necessarily exclude. For transparency, it also specifically calls out some equipment determined to belong to other locomotives and is not included in this offer for purchase.

Items / materials missing & estimated value:

1. Boiler inside side sheets (2). Estimated total value of \$3,000.
2. Boiler tubes. Estimated value of \$8,000.
3. Flexible and rigid staybolts, and sleeves. Estimated value of \$110,000.
4. Crosshead wrist pins (2). Estimated total value of \$3,000.
5. Rod brass adjustment wedge (1). Estimated total value of \$2,000.
6. Steam & air pressure gauges (at least 3). Estimated total value of \$1,000.
7. Grab irons and stanchions (4). Estimated total value of \$2,000.
8. Injector check valves (2). Estimated total value of \$4,000.
9. Number plate (1), builder, and superheater plate (3). Estimated total value of \$3,000.
10. Whistle. Estimated total value of \$4,000.

Total value of missing parts / materials estimated at \$140,000.

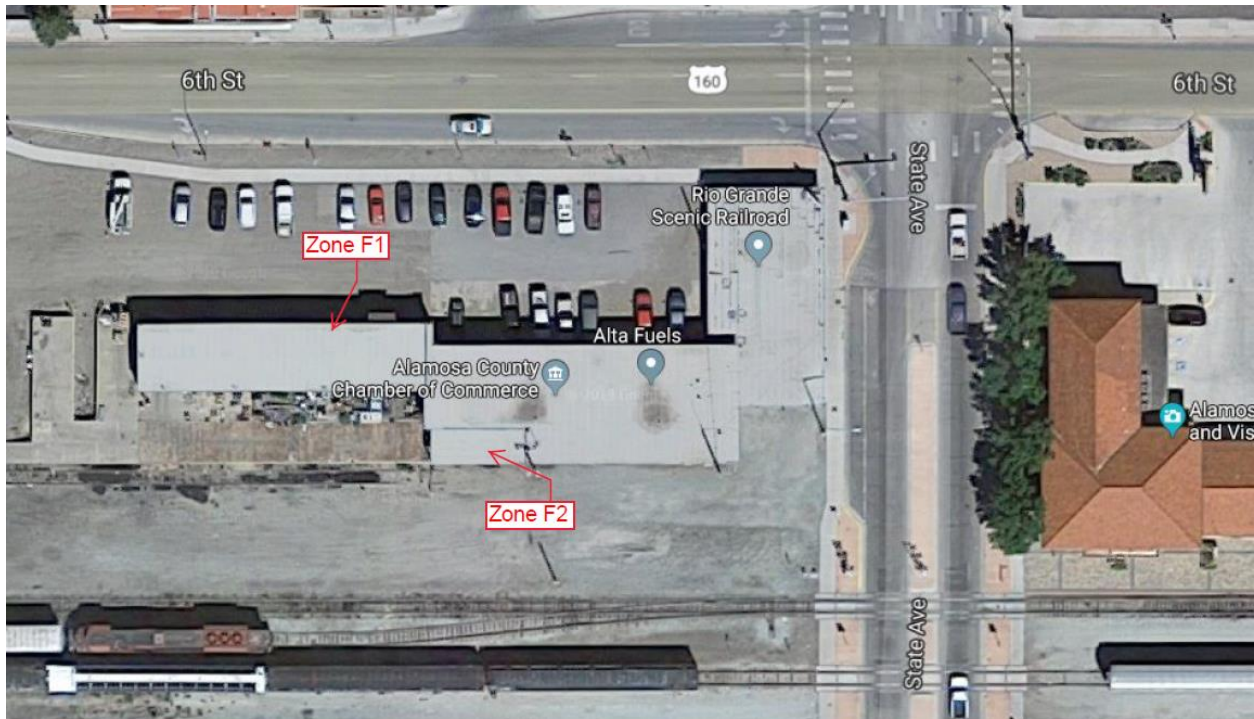
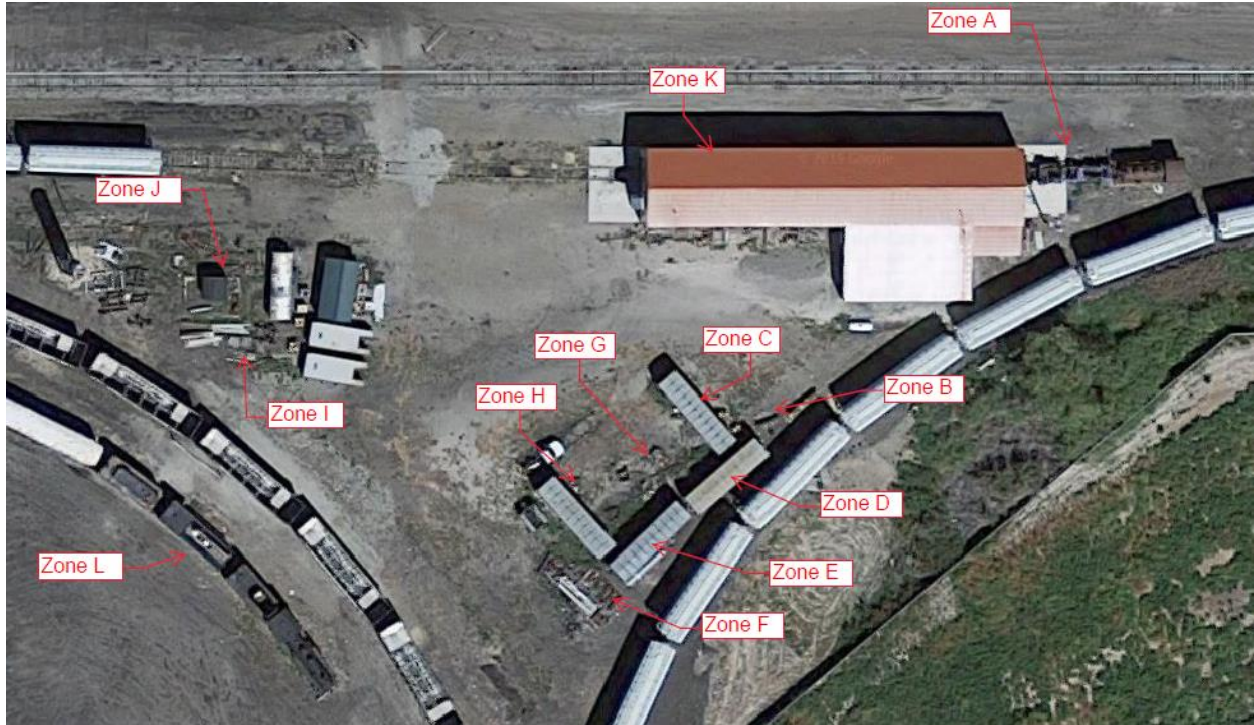
Thank you for your consideration of this purchase offer of \$110,000 USD. Please reply at your convenience,



Charles Franz
Steam Department Supervisor
Pacific Locomotive Assoc / Niles Canyon Railway

Cc Henry Baum, President
Alan Siegwarth, Steam Dept Manager

Appendix A: Site Map



The Pacific Locomotive Association, Inc. heritage railroad preservation society is a non-profit, 501 (c) (3) tax exempt charity.

Appendix B: Parts Inventory by Zone

Parts indicated as belonging to 1744 are intended to be included in this offer for purchase. Parts listed as #18 or #20 have been identified as belonging to those locomotives, and not included in this offer for purchase.

Note, this is NOT an exclusive list, and if purchased, the PLA reserves the right to take parts discovered and verified to belong to 1744 during removal of the equipment.

Zone A: Locomotive Frame.

- Entire 1744 frame, pistons, couplers, pilot truck, brake hangers, spring rigging, axles, crossheads, etc. All this material is together, and in one unit.

Zone B: North Field.

- Welded air reservoir – 1744.

Zone C: North Stock Car.

- Tubes, superheater flues – 20.
- Feedwater pump – 18.
- 3 Eccentric rod straps – 1744.
- 2 Brake adjustment rods – 1744.
- Dome lid – 1744.
- Dome lid – 20.
- 1 Brake head & shoe – 1744.
- Drawbar – 1744.

Zone D: Southeast Stock Car.

- ALL MATERIAL IN THIS CAR IS CRITICAL AND BELONGS TO 1744.
- Valves, fittings, piping, levers, burner, throttle, rods, decking, etc.

Zone E: Southwest Stock Car.

- Running boards – 1744.
- 5 Brake heads and shoes – 1744.
- 1 Eccentric rod strap – 1744.
- 29 Superheater flues – 1744.
- Valves & hoses – 1744.
- Small dome cover – 1744.
- 5 Connecting rods – 20.
- 2 running boards – 20.

Zone F: South Field.

- Jacketing – 1744.
- Riveted air reservoir – 1744.
- Smokebox cover – 20.
- Toolbox – 1744.
- Fuel line – 1744.

Zone G: Enclosed Field East.

- Smokebox cover, door, and grab irons – 1744.
- 3 pilot beams & cowcatcher – 1744.
- 2 long pilot beams – 1744.

Zone H: Enclosed Field West.

- Boiler sheet – door – 1744.
- Boiler sheet – rear tube – 1744.

Zone I: 1744 Boiler Shell.

- Boiler shell – 1744.
- Throttle rod (in shell) – 1744.
- Old boiler crown sheet – 1744.
- New boiler crown sheet – 1744.

Zone J: 1744 Cab.

- Cab and attachments – 1744.
- Old flexible stay caps – 1744.
- Power reverse bracket – 1744.
- Air pump bracket – 1744.
- One superheater unit – 1744.

Zone K: Steam Shop North Rack.

- Throttle lever marked “Earl’s Throttle” – 1744.
- 2 blowdown valves – 1744.
- (5) 2” gate valves 200psi – 1744.
- (1) ¼” gate valve 300psi – 1744.
- 2 Consolidated / muffled safety valves – 1744.
- 2 Ashcroft safety valves – 20.
- 6ET brakes; stand, independent, automatic, distributing, 2 feed – 1744.
- 15 washout plugs – 1744.
- Retaining pin – 1744.
- Copper tubing, air hose – 1744.

- Flexible staybolt gaskets – 1744.
- Turret valves – 1744.
- Injector check – 18?
- (1) 2" gate valve – 1744.
- Box of SP piston rings – 1744.
- Throttle choke – 1744.
- 3 mechanical lubricators – 20 / 18.
- (1) 5-feed hydrostatic lubricator – 1744.
- (1) mechanical lubricator – 1744.
- (3) mechanical lubricators – 18, 20.
- 1 dynamo – 1744.
- 1 air pump governor marked 1744 – 1744.
- 2 number boards – 1744.
- 2 headlights – 1744.
- 3 fusible plugs – 1744.
- Power reverse lever and quadrant – 1744.
- 6 SP grab iron stanchions – 1744.
- 1 SP injector muffler – 1744.
- 2 reflex water glasses – 1744.
- 2 Simplex #11 injectors painted red – 1744.
- 1 Simplex body – 1744.
- Injector parts, rings, handle.

Zone L: Tender.

- Everything attached to it – 1744.

Zone F1: Freight Shed Inside.

- 1 cross compound air compressor – 20.
- 1 cross compound air compressor – 1744.
- 1 brass bell – 1744.

Zone F2: Freight Shed Outside.

- 2 branch pipes
- Delivery pipe jacketing – 1744.
- 23 superheater units – 1744.
- Petticoat pipe – 1744.
- 2 stirrup steps, ladder, running board – 20.
- 2 main rods, 3 connecting rods – 1744.
- Throttle – 20.

- 2 valve spools – 20.
- Exhaust nozzle – 20.
- Cylinder covers – 20.
- Safety / whistle manifold – 1744.
- Sand dome – 1744.
- Stack – 1744.
- Main turret body and valve – 1744.
- Pallet of brake hangers – 20.
- Misc brake beams and equipment – 1744.
- Grab irons – 1744.
- Misc plumbing, pipes, valves – 1744.