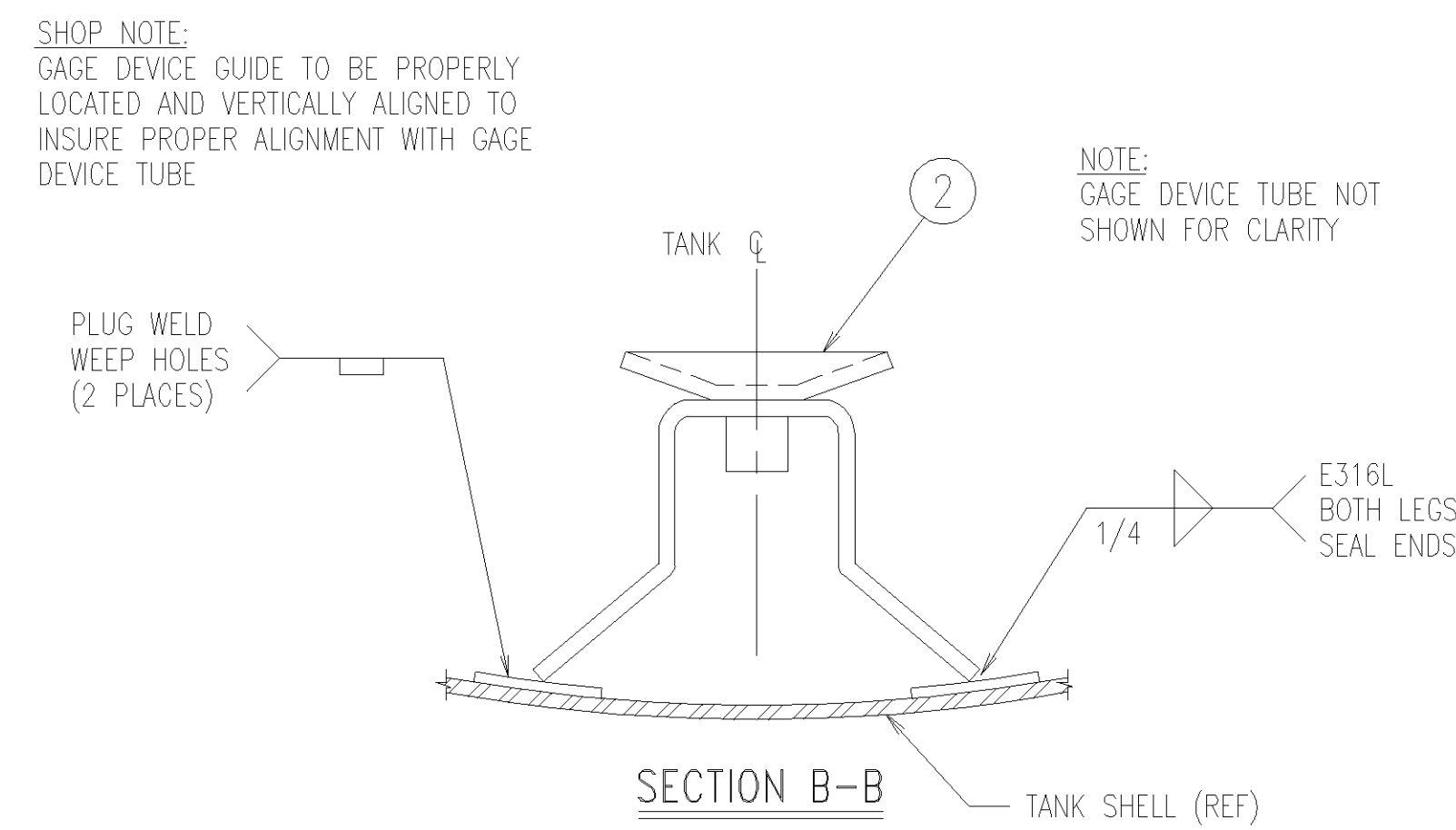
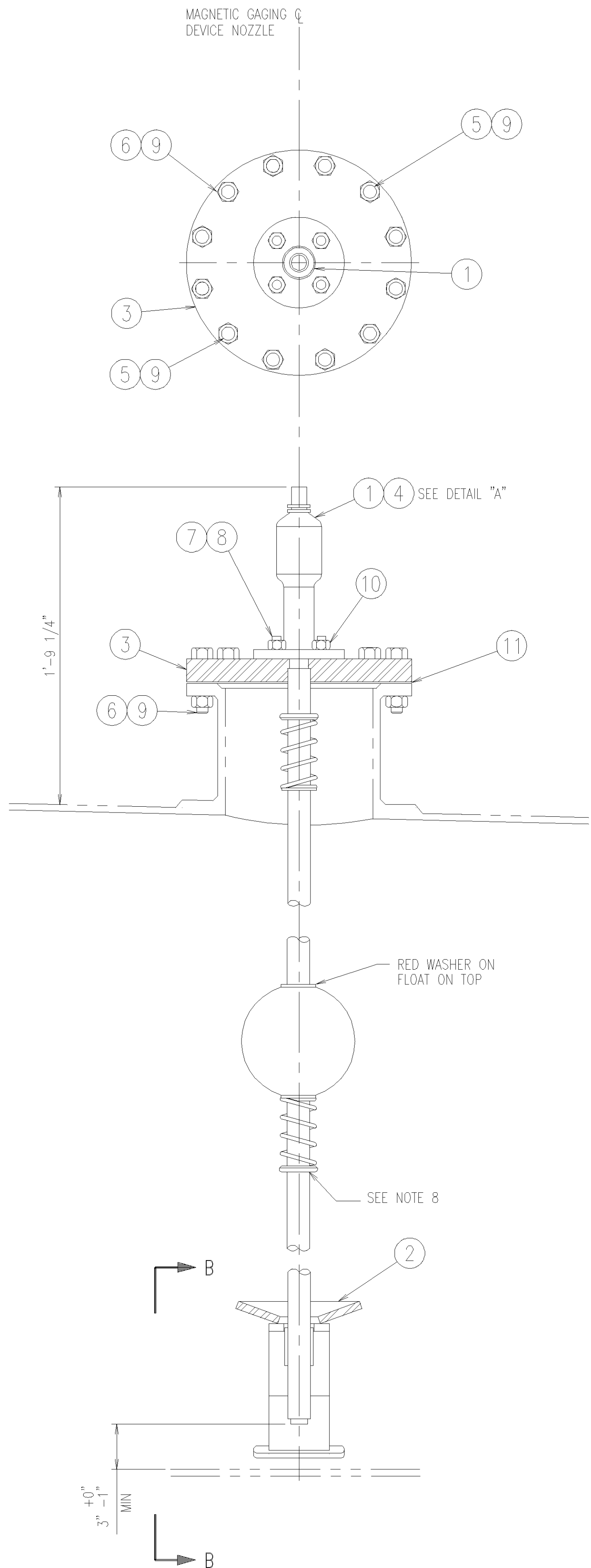
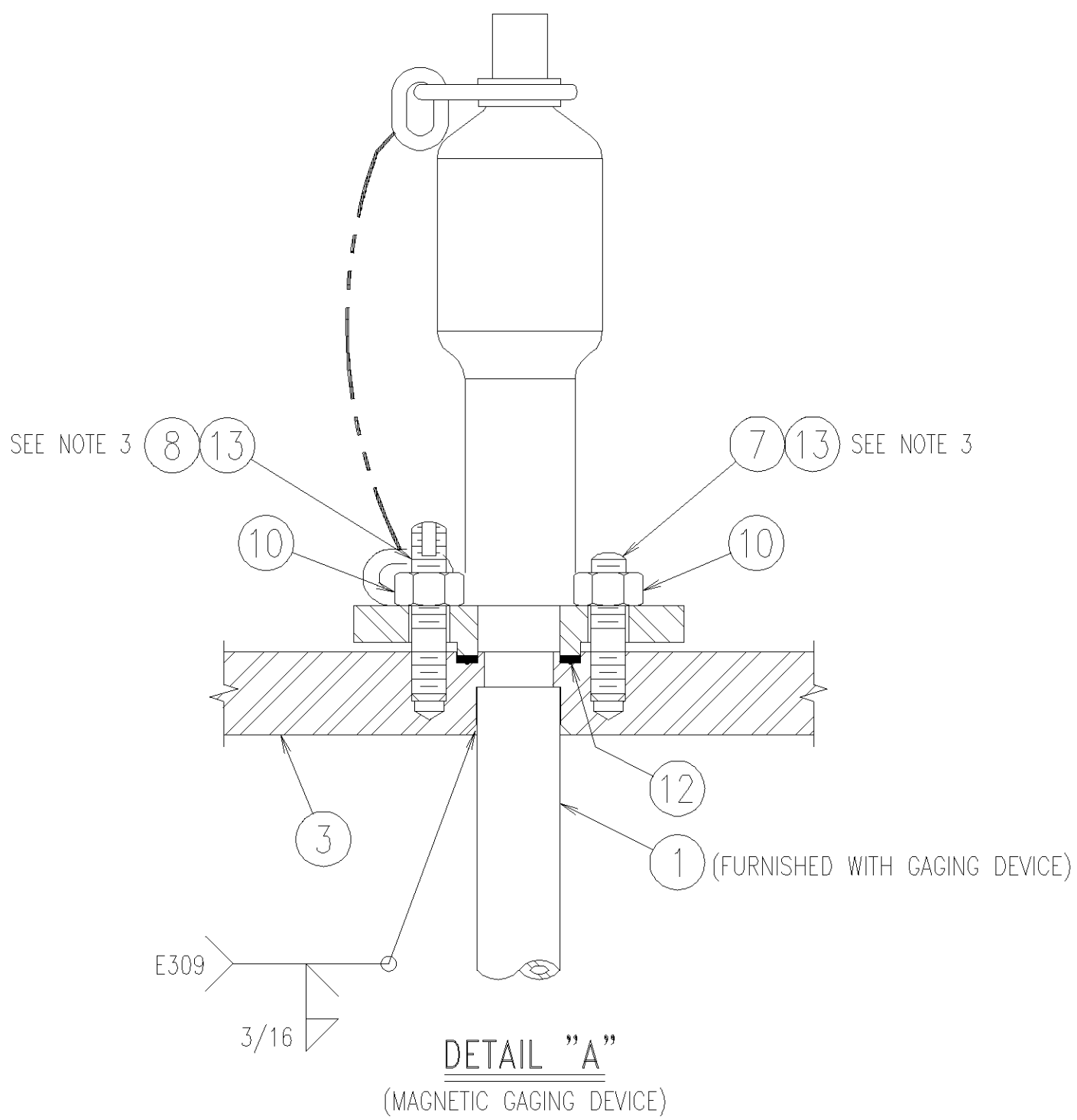


17	16	15	14	13	12	11	10	9	8	7	6	5	4	3	2	1
LINE	ITEM 11	ITEM 12	MATERIAL													
01	089-74396-09	089-73292-44	GYLON 3504													

PARTS LIST			
ITEM	PART NO.	QTY	DESCRIPTION
1	076-28348-MI	1	MAGNETIC GAGING DEVICE, MIDLAND B-612-S, BUNA-N SEAL (D-41289)
2	C-33161	1	GUIDE, GAGING DEVICE
3	C-33081	1	FLANGE, GAGING DEVICE
4	043-71735	0.05	PINTS, ETHYLENE GLYCOL ANTI-FREEZE
5	063-74377	2	BOLT, HVY HEX, 3/4"-10 UNC-2A X 4 1/2" W/SEAL HOLE, (A-10597)
6	063-74343	10	BOLT, HVY HEX, 3/4"-10 UNC-2A X 3 3/4" LG, A193-B7
7	063-79063	2	STUD, TBE, 5/8"-11 UNC-2A X 2 1/2" LG, A193-B7, (B-23382)
8	063-79254	2	STUD, TBE, 5/8"-11 UNC-2A X 3 1/4" LG, W/SEAL HOLE, (B-23446)
9	063-71092	12	NUT, HVY HEX, 3/4"-10 UNC-2B, A194-2H
10	063-71010	4	NUT, HVY HEX, 5/8"-11 UNC-2B, A194-2H
11	SEE LINE CHART	1	GASKET, 10 3/4" ID X 12 3/8" OD X 1/8" THK
12	SEE LINE CHART	1	GASKET, 1 1/2" ID X 2 1/4" OD X 1/8" THK
13	049-73401-LT	1	SEALANT THREADLOCKING, RED No. 271
14	D-41025	1	GAGE DEVICE INSTALLATION INSTRUCTIONS



- NOTES:
1. ALL INTERIOR WELDS SHALL BE FREE OF UNDERCUTS, BURRS, POROSITY AND SHARP EDGES.
 2. ROUND OFF ALL SHARP EDGES TO 1/8" RADIUS.
 3. APPLY THREAD SEALANT TO THREADS BEFORE INSTALLATION.
 4. FASTENERS MUST MEET ALL REQUIREMENTS OF THE SPECIFICATION AND MUST BE PROPERLY MARKED WITH MATERIAL GRADE AND THE MANUFACTURER'S REGISTERED SYMBOL. MUST COMPLY WITH PUBLIC LAW 101-592.
 5. FEMALE COMPONENT OF THREADED FASTENERS MUST BE FULLY ENGAGED AND NO THREADS MAY BE VISIBLE IN THE FEMALE PART. NYLON INSERT ON LOCKNUTS MUST BE FULLY PENETRATED BY THE MALE THREADED PART.
 6. THE ROUNDED END OF ALL STUDS IS THE NUT END.
 7. APPLY 2 OUNCES OF 70% ETHYLENE GLYCOL AND 30% WATER BY VOLUME, INTO GAGE DEVICE DOWN TUBE.
 8. TACK WELD SPRING COLLAR TO TUBE ON MARK PROVIDED BY VENDOR (4 PLACES).

A	JCB	9-29-99	ADDED AAR APPLICATION NUMBER
REV	BY	DATE	REVISION
A.A.R. APPLICATION NO. L996141			
FILE:			
UNLESS OTHERWISE SPECIFIED ON THIS DRAWING THE FOLLOWING TOLERANCES SHALL APPLY. SEE D-145000 FOR ADDITIONAL TANK CAR TOLERANCES. FRACTIONS MACHINED ±1/64" (.016")			
ALL OTHERS: (1" to 2")±1/16", (2" to 10")±1/8", (10" to 20")±1/4", (OVER 20")±1/2"			
DECIMALS 3 PLACE ±.005 2 PLACE ±.03 1 PLACE ±.1			
ANGLES MACHINED ±1/2 DEG. ALL OTHERS ±1 DEG.			
TRINITY INDUSTRIES, INC. RAILCAR DIVISION			
THIS DRAWING CONTAINS CONFIDENTIAL AND PROPRIETARY INFORMATION OF TRINITY INDUSTRIES, INC. THE DRAWING IS THE PROPERTY OF TRINITY INDUSTRIES, INC. AND IS LOANED FOR ENGINEERING REVIEW ONLY. THE DRAWINGS MAY NOT BE COPIED OR USED FOR ANY OTHER PURPOSE WITHOUT THE WRITTEN CONSENT OF TRINITY INDUSTRIES, INC. AND SHALL BE RETURNED ALONG WITH ALL COPIES UPON DEMAND. © TRINITY INDUSTRIES, INC. 1999			
DRAWN	ORH	8-19-99	GAGE DEVICE ARRANGEMENT 119" ID TANK CAR
CHKD	JCB	8-27-99	
APPD	KFC	8-28-99	
1st FILE	9965		
N/LA			
WEIGHT			DRAWING NO: D-45383
	SHEET	REV	SIZE
	1	A	D