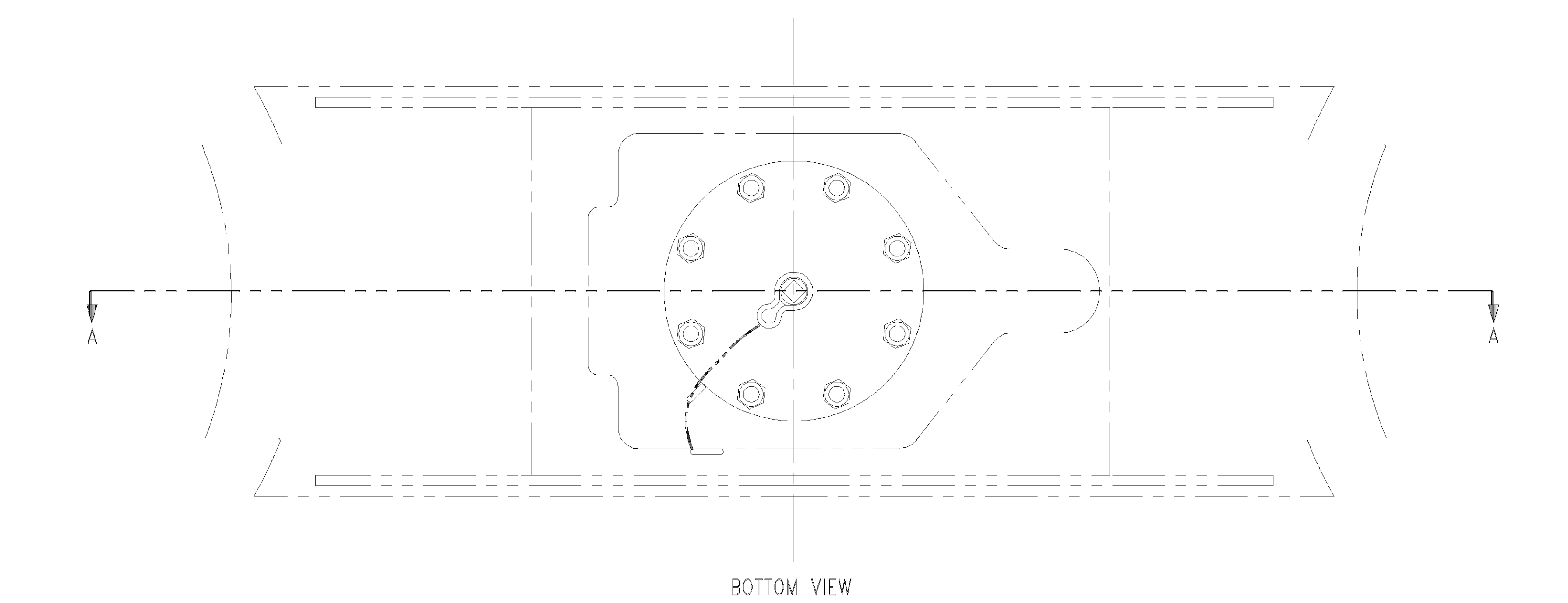
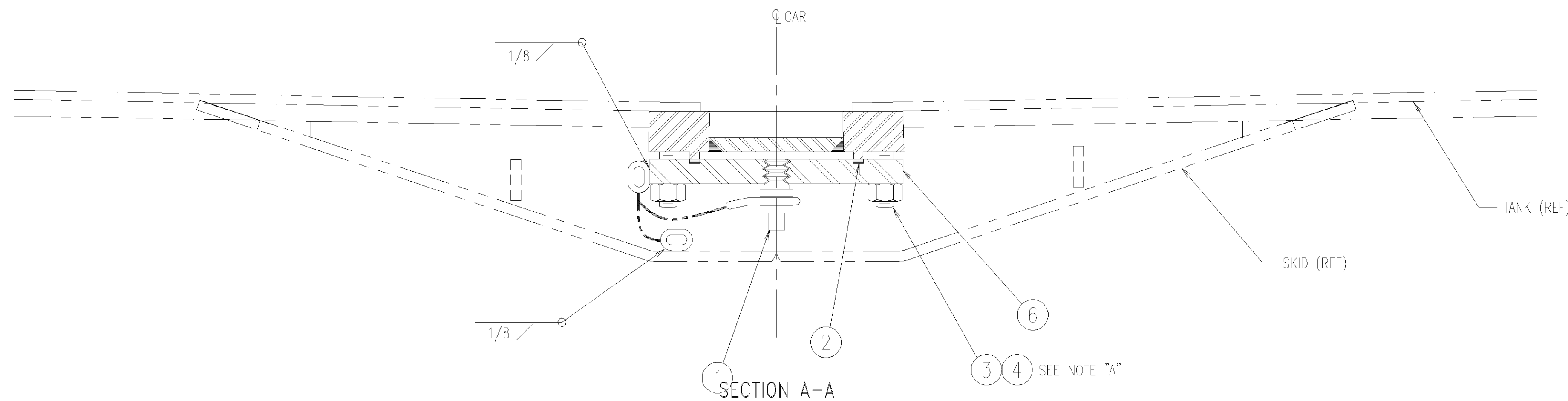


LINE	ITEM 2 PART NO.	GASKET MATERIAL
01	089-72112-09	VITON
02	089-72112-10	GARLOCK GYLON 3504, BLUE
03	089-72112-12	GARLOCK 900
04	089-72112-03	TEFLON
05	089-72112-13	COMPRESSED ASBESTOS, DURABLA BLACK
06	089-72112-16	DURABLA GOLD
07	089-72112-18	VITON "A"
08	089-72112-19	GARLOCK 3545
09	089-72112-15	VITON "B"

PARTS LIST			
ITEM	PART NO	QTY	DESCRIPTION
1	B-22619	1	PLUG AND CHAIN ASSEMBLY, 1" MI OR DI
2	SEE LINE CHART	1	GASKET, 7 9/16" ID X 8 7/16" OD X 1/8" THK
3	063-78873	8	STUD, TBE, 3/4"-10UNC-2A X 3 1/2" LG A193-B7
4	063-73497	8	LOCKNUT, HVY HEX, 3/4"-10UNC-3B, NYLON INSERT
5	040-73401-LT	0.5	SEALANT, THREAD LOCKING RED NO. 271
6	B-28647	1	FLANGE, BLIND, BOTTOM OUTLET, WITH 1" NPT



NOTE "A"  
 THREAD SEALANT COMPOUND  
 (ITEM 5) TO BE APPLIED TO  
 ALL THREADED CONNECTIONS.

TRINITY PARTS AND COMPONENTS, LLC  
 CONFIDENTIAL/PROPRIETARY INFORMATION

D	KHB	5-4-98	ROTATED CHAIN SWIVEL AND REROUTED CHAIN
C	KHB	4-15-98	DELETED ITEM 6 3/8" CHAIN, MADE ITEM 7 ITEM 6.
B	CT	12-8-97	CHANGED BOLT ORIENTATION IN BOTTOM VIEW
A	JBN	2-28-95	REVISED STUD, WAS TFL.
REV	BY	DATE	REVISION
A.A.R. APPLICATION NO. A936075			
UNLESS OTHERWISE SPECIFIED ON THIS DRAWING THE FOLLOWING TOLERANCES SHALL APPLY. SEE D-145000 FOR ADDITIONAL TANK CAR TOLERANCES. FRACTIONS MACHINED ±1/64" (0.016")			
ALL OTHERS: (1" to 2")±1/16", (2" to 10")±1/8", (10" to 20")±1/4", (OVER 20")±1/2"			
DECIMALS 3 PLACE ±.005 2 PLACE ±.03 1 PLACE ±.1			
ANGLES MACHINED ±1/2 DEG. ALL OTHERS ±1 DEG.			
<b>TRINITY INDUSTRIES, INC.</b> RAILCAR DIVISION			
THIS DRAWING CONTAINS CONFIDENTIAL AND PROPRIETARY INFORMATION OF TRINITY INDUSTRIES, INC. THE DRAWING IS THE PROPERTY OF TRINITY INDUSTRIES, INC. AND IS LOANED FOR ENGINEERING REVIEW ONLY. THE DRAWINGS MAY NOT BE COPIED OR USED FOR ANY OTHER PURPOSE WITHOUT THE WRITTEN CONSENT OF TRINITY INDUSTRIES, INC. AND SHALL BE RETURNED ALONG WITH ALL COPIES UPON DEMAND. © TRINITY INDUSTRIES, INC. 1998			
DRAWN	ORH	12-1-92	<b>BOTTOM OUTLET ARRANGEMENT</b>
CHKD	MSR	12-10-92	
APPD	SLM	12-10-92	
1st FILE	9806C		
NLA			
WEIGHT			
DRAWING NO:			D-45748
SHEET	REV	SIZE	
1	D	D	