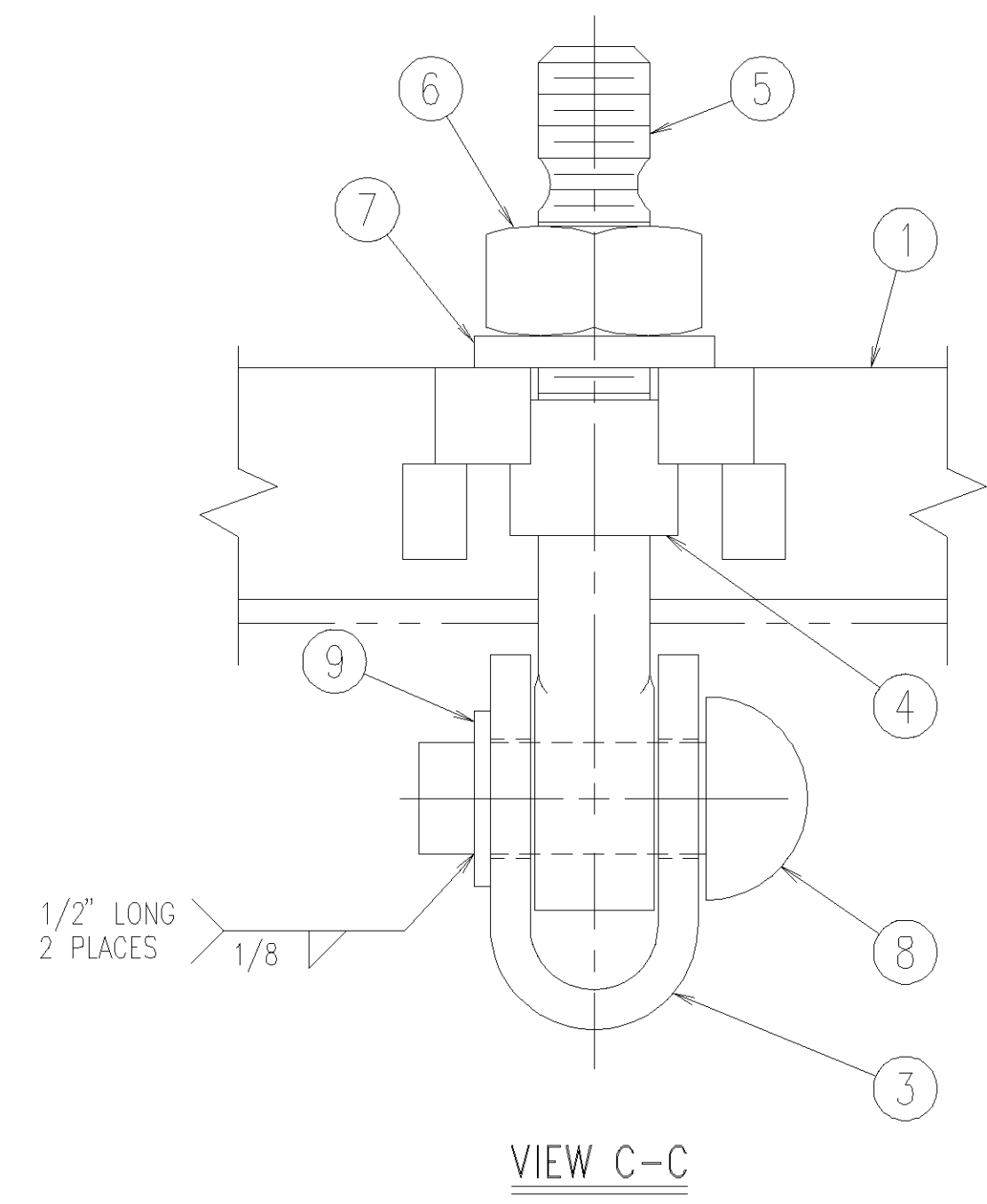
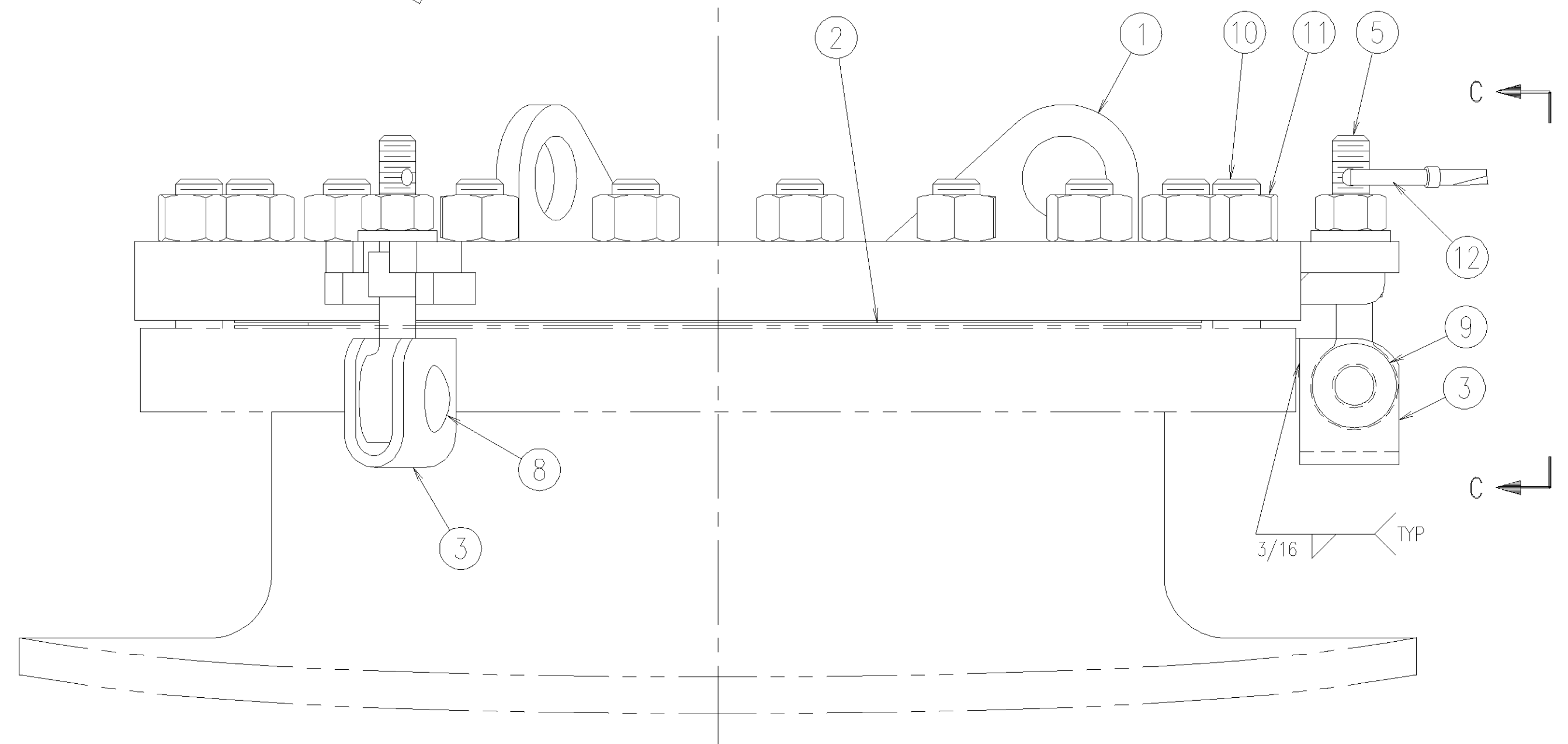
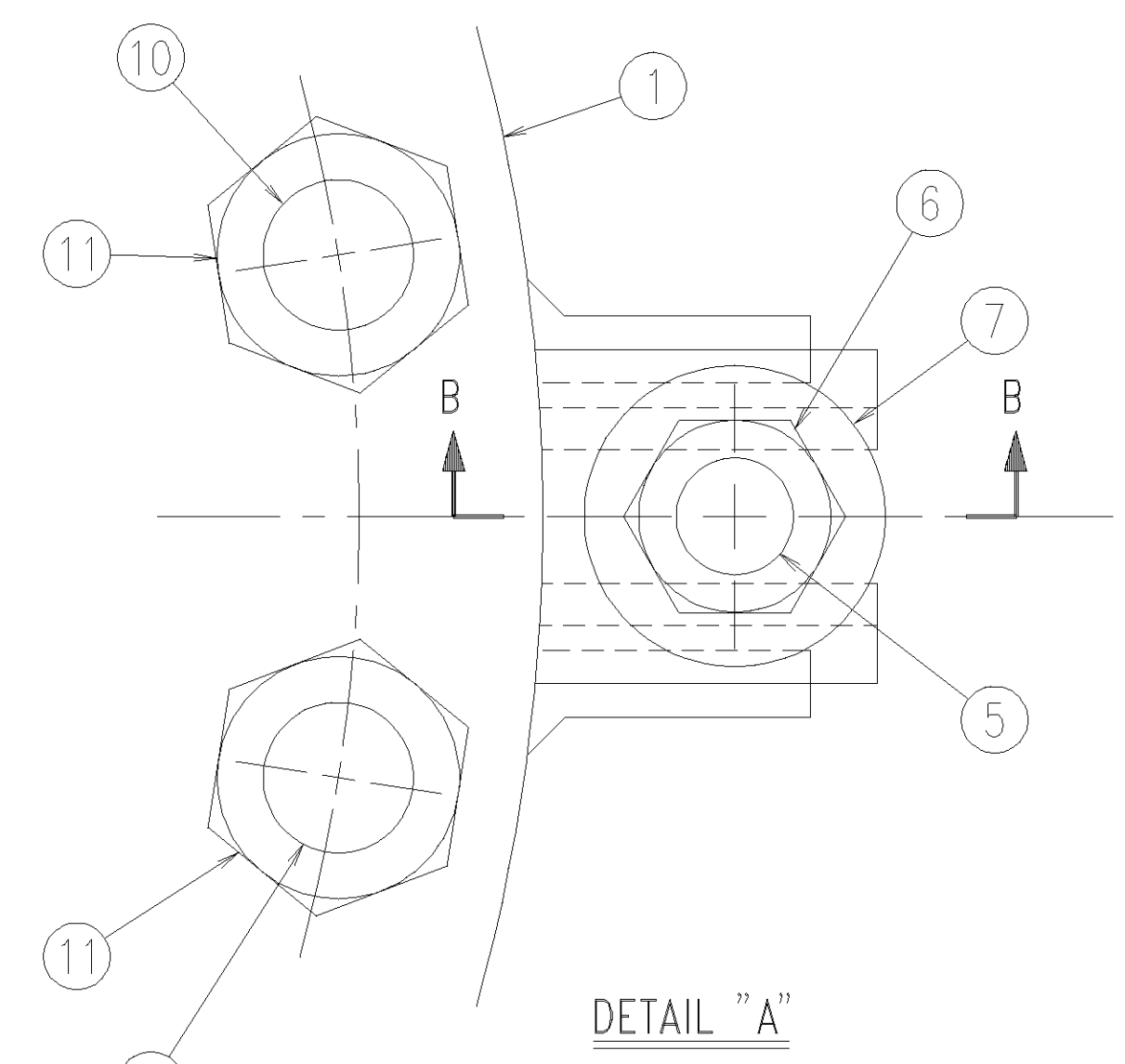
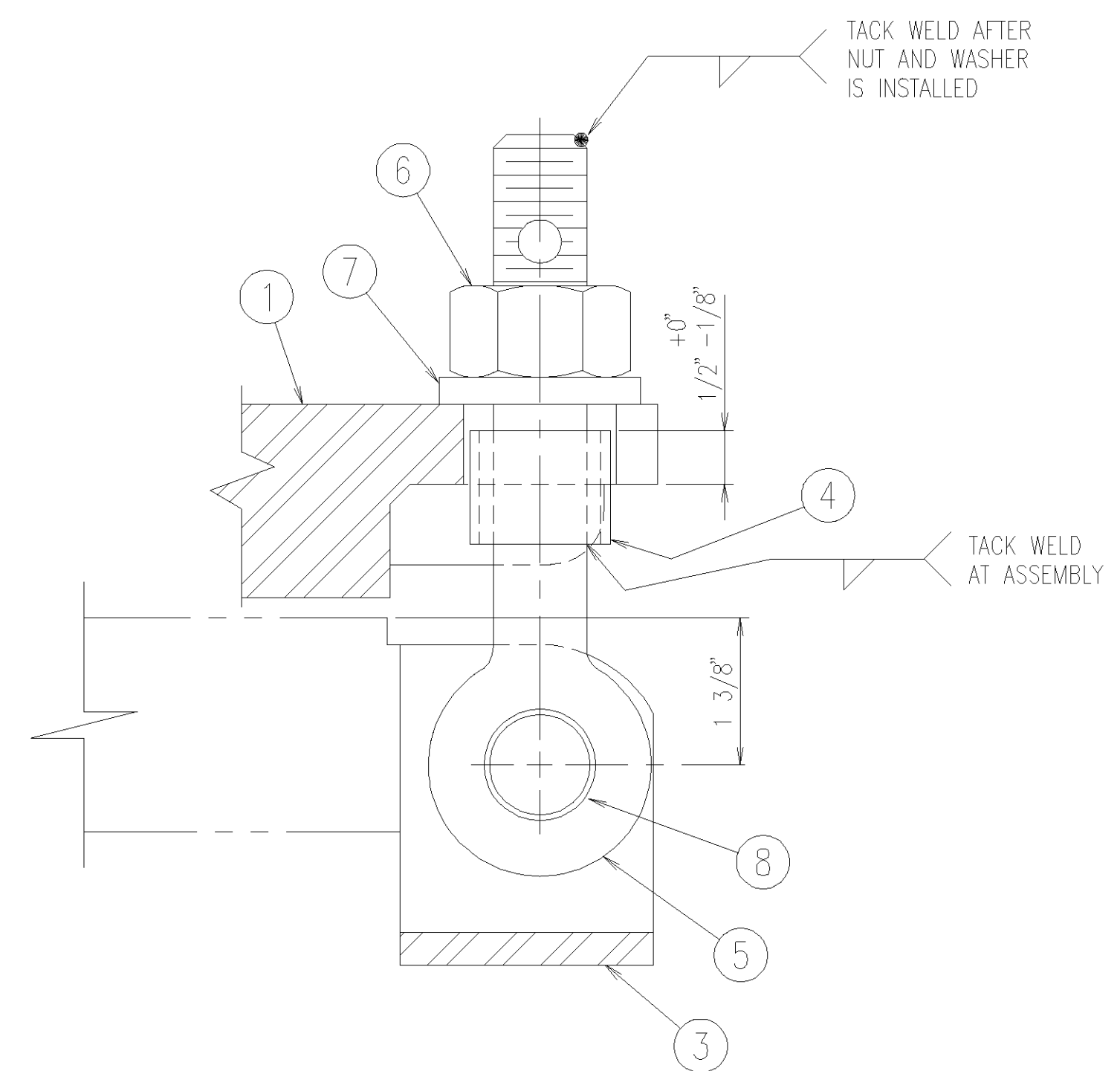
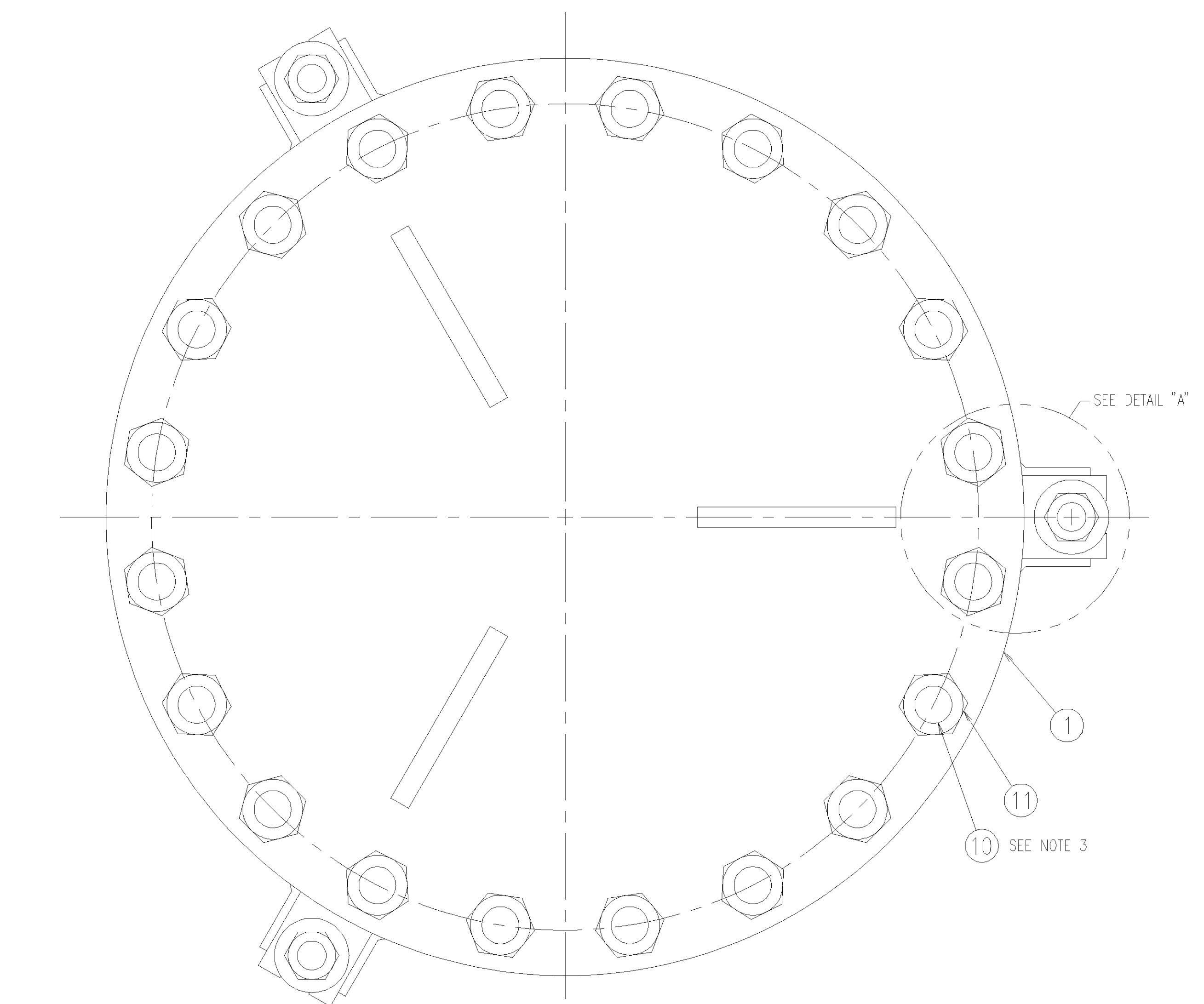


PARTS LIST

ITEM	PART NO.	QTY	DESCRIPTION
1	D-443662	1	COVER ASSEMBLY, 20" MANWAY, A516-70
2	089-20124-05	1	GASKET, 20" ID X 23 3/4" OD X 1/8" THK, GYLON 3504
3	A-110044	3	EYEBOLT LUG, MANWAY, A36
4	B-25503-01	3	COLLAR, PIPE 1" SCH 80 X 1 1/16" LG, A53
5	063-20103	3	SEAL BOLT, MANWAY, 7/8" X 7" OAL, A449 TYPE 1
6	063-72097	3	NUT, HVY HEX, 7/8-9 UNC-2B, A563 GR C
7	A-111048	3	WASHER, 2 1/4" OD X 15/16" ID X 5/16" THK, A36
8	063-72346	3	RIVET, BUTTON HD, 7/8" DIA X 2 1/2" LG, CS
9	063-77420	3	WASHER, FLT, TYPE A PLN, 7/8N, CS
10	063-20125	20	STUD, TBE, 1 1/8"-7 UNC-2A X 4 3/4" LG, A193-B7
11	063-71149	20	NUT, HVY HEX, 1 1/8"-7 UNC-2B, A194-2H
12	064-73322	3	SEAL, SURE DOOR LOCK, 3/8" WIDE X 8 1/2" LG

"A" END



- NOTES:
1. FIT WASHER (ITEM-9) SNUG AGAINST MANWAY LUG (ITEM-3) AND WELD TO RIVET (ITEM-8) WITH TWO 1/2" LONG 1/8" FILLET WELDS 180° APART.
 2. PROTECT THREADS ON FASTENERS DURING BLASTING AND PAINTING OPERATION.
 3. APPLY THREAD SEALANT TO THREADS ON SEATED PART OF STUDS BEFORE INSTALLATION.
 4. FASTENERS MUST MEET ALL REQUIREMENTS OF THE SPECIFICATION AND MUST BE PROPERLY MARKED WITH MATERIAL GRADE AND THE MANUFACTURER'S REGISTERED SYMBOL. MUST COMPLY WITH PUBLIC LAW 101-592.
 5. FEMALE COMPONENT OF THREADED FASTENERS MUST BE FULLY ENGAGED AND NO THREADS MAY BE VISIBLE IN THE FEMALE PART.

REV	BY	DATE	REVISION
A.A.R. APPLICATION NO. F966086			
FILE:			
UNLESS OTHERWISE SPECIFIED ON THIS DRAWING THE FOLLOWING TOLERANCES SHALL APPLY: SEE D-145000 FOR ADDITIONAL TANK CAR TOLERANCES. FRACTIONS MACHINED ±1/64" (016") ALL OTHERS: (1" to 2") ±1/16", (2" to 10") ±1/8", (10" to 20") ±1/4", (OVER 20") ±1/2" DECIMALS 3 PLACE ±.005 2 PLACE ±.03 1 PLACE ±.1 ANGLES MACHINED ±1/2 DEG. ALL OTHERS ±1 DEG.			
TRINITY INDUSTRIES, INC. RAILCAR DIVISION			
THIS DRAWING CONTAINS CONFIDENTIAL AND PROPRIETARY INFORMATION OF TRINITY INDUSTRIES, INC. THE DRAWING IS THE PROPERTY OF TRINITY INDUSTRIES, INC. AND IS LOANED FOR ENGINEERING REVIEW ONLY. THE DRAWINGS MAY NOT BE COPIED OR USED FOR ANY OTHER PURPOSE WITHOUT THE WRITTEN CONSENT OF TRINITY INDUSTRIES, INC. AND SHALL BE RETURNED ALONG WITH ALL COPIES UPON DEMAND. © TRINITY INDUSTRIES, INC. 1996			
DRAWN	DLB	9-18-96	MANWAY COVER INSTALLATION 20" FLANGED MANWAY W/ SAFETY SEAL BOLTS CLASS DOT 111A100W1
CHKD	AEE	9-19-96	
APPD	CCH	9-19-96	
1st FILE	9648		
NLA			
WEIGHT			DRAWING NO:
1078-0686-000	D-443687		SHEET 1 OF 1
			REV D